

## Personal Care Options

### You are the Expert of Your Life

No one knows your strengths, needs, preferences, and desires better than you do.

### Person Centered Planning

Person-centered Planning is a process for supporting an individual and honoring choices based on personal values and preferences. This plan focuses on how *you* want to live.

### Self-Directed Care

You have been making decisions about your life for years. You can continue to make decisions, direct your care, choose your care providers, and remain in control of your life and finances with the knowledge of available services and supports.

### Care Partner

You are an active participant in your care with the ability to give as well as receive care.

**Real People,  
Real Answers,  
Real Help!**

## Initial Assessment

This comprehensive assessment identifies the needs (medical, personal, and environmental). It is conducted in your home by our trained professionals and includes the development of your personalized Plan of Care. It also includes quarterly re-assessment visits by your Care Management team, friendly reassurance calls, and your personalized client binder that details your care.

## Monthly Care

The monthly fee includes our screening and ongoing monitoring of service vendors, the scheduling of your vendors, options counseling, transportation options, and information and referral services.

### Contact

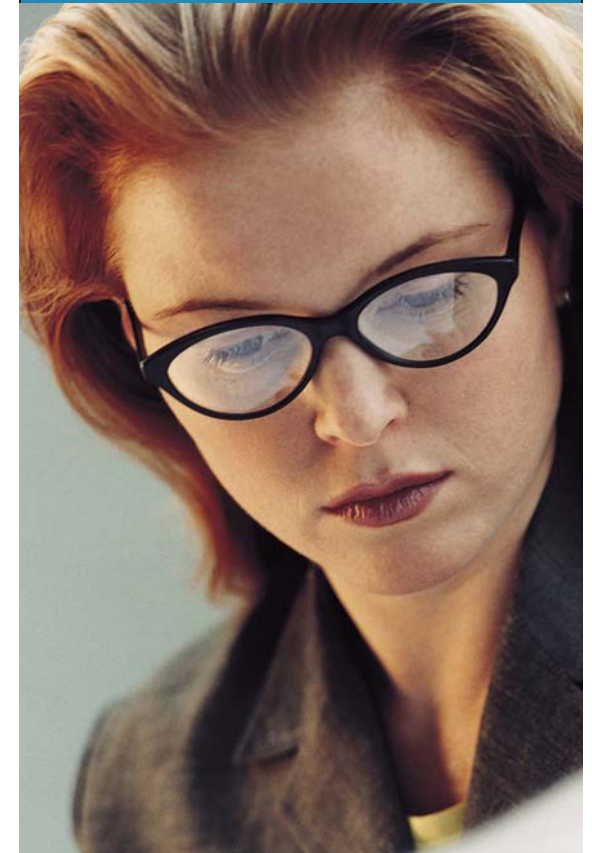
**The Information Center, Inc.  
for pricing on available services.**

The Information Center, Inc.

20500 Eureka Road  
Suite 110  
Taylor, MI 48180  
Phone: (734)282-7171  
Fax: (734)282-7105  
[www.theinfocenter.info](http://www.theinfocenter.info)

The **Information Center, Inc.**  
*The Family Resource Place*

## Care Solutions Program



Let us help you find the option that is right for you. Our trained and dedicated staff is happy to answer your questions and is waiting to serve you.

## A Menu of Options To Support Your Independence At Home

- Benefits Eligibility Analysis
- Homemaking
- Personal care assistance
- In-home private duty nursing
- Emergency medical response system
- Caregiver respite
- Assistive technology
- Adult Day Care
- Budget Counseling
- Home maintenance & modification



It is your decision. Our goal is to help you understand what services and supports are available to you. You make the choices.

If you are eligible, or become eligible for subsidized or no cost services, we will inform you promptly.

We are able to offer services with reasonable fees because we are a non-profit organization supported by the community for almost 35 years.

We receive funds from the Michigan Department of Community Health and The Senior Alliance to provide no cost or subsidized services for eligible residents and can check into what benefits you may be eligible for.

## IT'S YOUR CHOICE

Our caring professionals listen to you. They provide you with options to choose from and will answer your questions.

They serve you as independent living consultants to help guide you through the maze of programs, services, and supports that are available to you.

You choose who you would like to involve in planning for your needs. We use a person centered planning process that welcomes and encourages the involvement of family members, friends, and others who support you.

This service is perfect for people facing physical difficulties or anyone needing assistance in order to continue to live independently.



For family members living a distance from their parent or other loved one, we serve as a caring advocate and your link when you cannot be there.

### WHO WE ARE:

Our care managers are Registered Nurses and Social Workers with many years of experience in planning and arranging a wide range of care and services.

They listen and ask you about your needs and priorities, and then assist you by providing helpful information, encouraging and supporting you in your decisions. You decide the services that are right for you.

We can connect you to resources you may not know about such as meals on wheels, in home doctors, and veterans programs you may be eligible for.

Should the need arise for more intensive services, our care managers will assist with the transition.

One call connects you to the solution –

**A year of care** in a nursing home can cost \$79,000 or more.\* An Assisted living facility can cost in excess of \$37,000 a year.\* Care Solutions can save you more than \$10,000 over these alternatives – and can allow you or your loved one to remain at home, in familiar and comfortable surroundings.

\*For the Detroit Metro Area per study by Genworth Financial, 2008

**Care Solutions**  
**(734) 282-7171**

**The information Center, Inc.**  
*The Family Resource Place*